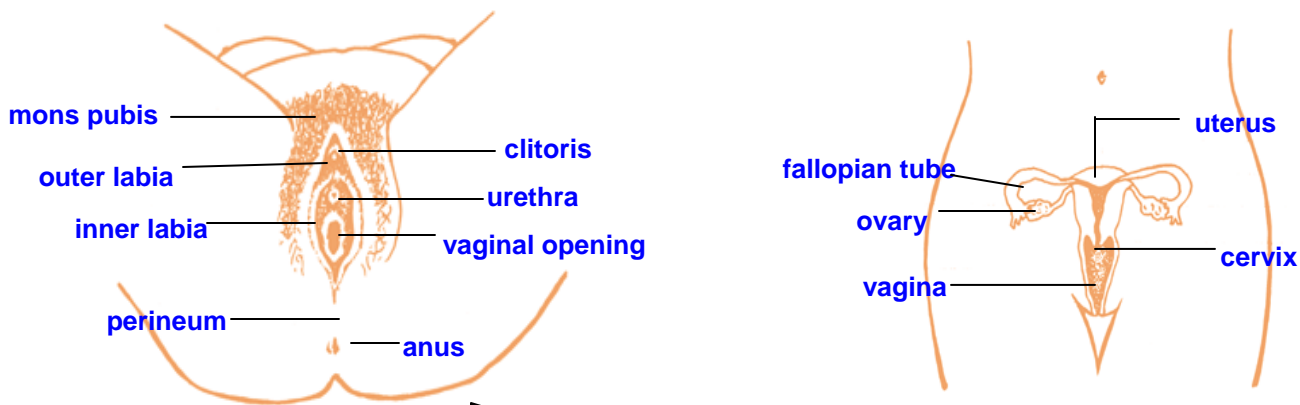


Female Anatomy

ON THE OUTSIDE: The whole female genital area is called the **vulva**. The **mons pubis** is the soft, raised area over the pubic bone where the pubic hair grows. The **labia** are the protective lips of the vagina. There are **outer lips** (labia majora) & **inner lips** (labia minora). The **clitoris** is the small bump in the front of the vulva. It is very sensitive & its purpose is for sexual arousal. The **hymen** (not shown) is a thin piece of skin that partially covers the vaginal opening. The perineum is the space between the vagina and anus.

ON THE INSIDE: The ovaries are the glands where the eggs (ova) are stored. Eggs are the cells that join with sperm from the male to form an embryo, which can grow into a baby. A girl is born with millions of eggs and once a month the ovaries release one egg (ovulation). It travels through the **fallopian tubes** to the uterus. The **uterus** is the place where a pregnant woman carries the fetus (growing baby). For women who are not pregnant, the uterus is where the menstrual fluids build up before a period. When a woman's period starts every month, these fluids are released. The **period** (menstruation) is blood and tissue from inside the uterus that is released through the cervix. The **cervix** is a very narrow, neck-shaped outer opening of the uterus. The **vagina** is the passage from the uterus to the outside of the body. It is about 3 to 5 inches long. Girls' bodies have three openings in the genital area: from front to back — the urethra, the vagina and the anus. The **vagina** is the passage for the period, discharge (a clear or whitish fluid which comes out of the vagina to keep it clean and healthy), the passage through which a baby is born, & where the penis goes during vaginal sex. The **hymen** (not shown) is a thin ring of skin inside the vagina near the opening. Some girls are born without a hymen. The **urethra** is the tube through which urine (pee) is carried from your bladder to the outside of the body. The **anus** is the opening through which feces (waste) pass out of the body and the place where the penis is put during anal sex.



Male Anatomy

ON THE INSIDE: The penis is the organ men use for urinating and sexual activity. The rounded tip, or head, of the penis is called the **glans**. The long part is called the **shaft**. The **foreskin** (not shown) is a piece of skin that covers the glans. Sometimes the foreskin is removed soon after birth by a procedure called circumcision. Uncircumcised males should pull back the foreskin and wash the glans to avoid infections.

ON THE OUTSIDE: The testicles (balls) are the glands that make sperm. **Sperm** are tiny cells ejaculated (released) from the penis in semen. The sack of skin that holds the testicles is the **scrotum**. The **vas deferens** are the tubes that carry the sperm from the testicles to the prostate gland. The **prostate gland** (has a muscular portion which controls the release of urine and glandular portion which secretes an alkaline fluid that makes up a part of the semen) and the **seminal vesicle** (either of two small saclike glands that add nutrients to semen during ejaculation) make the semen (the liquid in which sperm travel). Semen and urine (pee) pass out of the body through the **urethra**, a tube inside the penis that opens at the head of the penis. A valve in the urethra closes when a man urinates or ejaculates so semen and urine never come out at the same time. The **bladder** is the organ in both males and females where urine is stored. Boy's bodies have 2 openings in the genital area.

